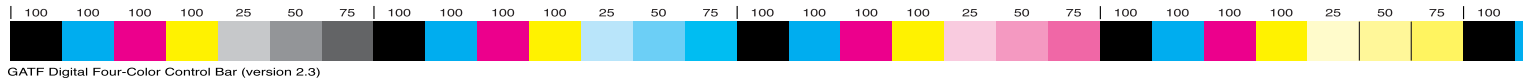




PEAKED LANCEY CONDITION

EQUIPMENT LIST



PRESS ROOM

SIX-COLOR HEIDELBERG HALF WEB: 22.75" x 20" WITH SHEETER AND COMBINATION FOLDER, GLUE, DIE CUT AND PERF UNIT, GÄMMERLER IN-LINE ROTARY TRIMMER & STACKER, WITH IN-LINE COMPUTER CONSOLE, CPC-01, 02

SIX-COLOR HEIDELBERG CD: 28" x 40" WATER-LESS PRESS WITH EXTENDED DELIVERY AND TOWER COATER, AUTO PLATE CHANGERS WITH IN-LINE COMPUTER CONSOLE, CPC 01, 02, 03, 04 AUTO REGISTER

SIX-COLOR HEIDELBERG SM102: 28" x 40" WITH TOWER COATER, ONE PERFECTING UNIT AND IN-LINE COMPUTER CONSOLE, CPC 01, 02, 03

SIX-COLOR HEIDELBERG SPEEDMASTER SIX-COLOR PRESS: 28" x 40", PERFECTING (4/2), WITH IN-LINE COATING SYSTEM, REMOTE INKING WITH CLOSED LOOP SCANNING, AUTOMATIC PLATE LOADING AND MAKE-READY PRESETS



SIX-COLOR HEIDELBERG: 28" x 40" WITH IN-LINE COMPUTER CONSOLE, CPC 01, 02

SIX-COLOR HEIDELBERG CD 74 SIX-COLOR PRESS: 23.25" x 29", EXTENDED DELIVERY, WITH IN-LINE COATING SYSTEM, REMOTE INKING WITH CLOSED LOOP SCANNING, AUTOMATIC PLATE LOADING AND MAKE-READY PRESETS

FOUR-COLOR HEIDELBERG: 28" x 40" WITH ONE PERFECTING UNIT AUTO PLATE CHANGERS WITH IN-LINE COMPUTER CONSOLE, CPC 01, 02, 03

TWO-COLOR HEIDELBERG: 28" x 40" WITH ONE PERFECTING UNIT AUTO PLATE CHANGERS WITH IN-LINE COMPUTER CONSOLE, CPC 01, 02, 03

TWO-COLOR RYOBI: 13.375" x 17.75"

HALM JET ENVELOPE PRESS TWO-COLOR PRESS WITH PERFECTOR (1/1)

HAMADA 770 TWO-COLOR PRESS 14" x 18"

ELECTRONIC PRE-PRESS

PRE-PRESS DIVISION

- 16 POWER MAC WORKSTATIONS
- 6 PENTIUM PC WORKSTATION

SERVER & STORAGE

- HP NETSERVER LPR WITH NETSTORAGE RAID
- CREO SERVER 5000 4-CPU POWER PC WITH 730GB RAID
- TIMNA WEB ARCHIVING SOLUTION
- AIT JUKEBOX WITH 1.6 TERABYTE NEAR LINE STORAGE

SCANNER

- HEIDELBERG CHROMA GRAPH S-3400
- SCITEX EVERSMAST SUPREME FLATBED SCANNER W/OIL MOUNT AND COPYDOT
- 2 -HP SCANJET 7400C SCANNER W/OCR

CREOSCITEX RIP/TRAP

- 2-BRISQUE EXPRESS QUAD IMPOSE

AGFA RIP/TRAP

- APOGEE SERIES 3 PDF WORKFLOW

CREOSCITEX

PLATESETTER/PROOFER

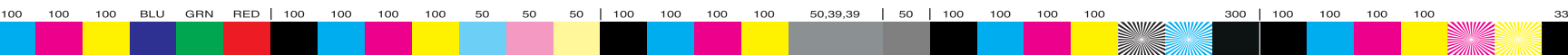
- TRENDSETTER SPECTRUM 3244F

AGFA PLATESETTER

- GALILEO VXT

PRE-PRESS DIGITAL PROOFING SYSTEMS

- 8 PAGE CREO IRIS 43 WIDE (360DPI "COLOR DIGITAL BLUELINE")
- 2-8 PAGE AGFA SHERPA2 (720 DPI "COLOR DIGITAL BLUELINE")
- 4 PAGE CREO IRIS REALIST 5030 (600 DPI COLOR DIGITAL INKJET)
- 2-8 PAGE AGFA SHERPA 43 (720 DPI COLOR DIGITAL INKJET)
- 4 PAGE & 8 PAGE CREO SPECTRUM DIGITAL HALFTONE (2400DPI COLOR PROOFING)



```
<v1.60><e0> @header:DOCUMENT @doc info:Source  
Pathname:Drivel: Current  
Jobs:PEA002:Comp2.QK  
Destination Pathname:  
Drivel:Desktop Folder:  
Last modified: 12:31 PM:  
10/2/02 Document Size:  
1723K Most recently saved  
version: 5.01 Document has  
been saved by the follow-  
ing versions of  
QuarkXPress: 5.01 Total
```

QUALITY CONTROL

- PRESSROOM EQUIPPED WITH 5000° K VIEWING LIGHTS
- GRETAG DENSITOMETERS ON ALL PRESSES
- THREE DIFFERENT COLOR VIEWING ROOMS EQUIPPED WITH 5000° K VIEWING LIGHTS
- TWO GRETAG MACBETH SPECTROEYE SPECTROPHOTOMETERS
- CCDOT 4 DIGITAL DOT METER FOR READING PLATE SCREEN VALUES
- GLOSSGUARD II GLOSS-METER
- TECHNIDYNE BRIGHTMETER MIRO S-5 FOR PAPER ANALYSIS
- ROTRONIC PAPER SWORD

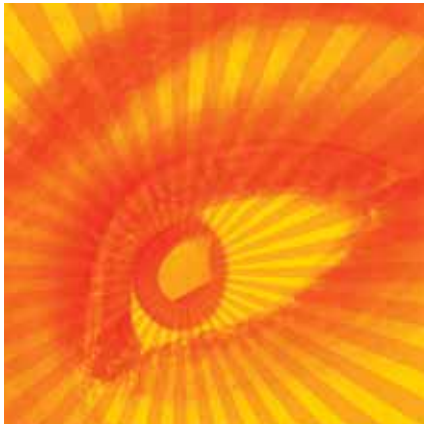
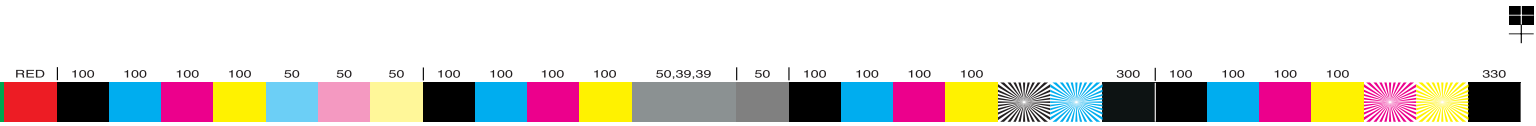
PRESS FINISHING

- HEIDELBERG AQUEOUS COATING UNITS: 3-28" x 40" 1-23" x 29"
- HEIDELBERG LETTER PRESS: 10" x 15"
- HEIDELBERG FLAT BED CYLINDER LETTER PRESS: 25" x 35"
- JOHANNISBERG LETTER PRESS: 29" x 41" MOEL 104-S

BINDERY

- MULLER-MARTINI MONOSTAR PERFECT BINDER (18 STATIONS) WITH IN-LINE MERIT II 3-KNIFE TRIMMER WITH STACKER
- MCCAIN 2000 8-POCKET SADDLE STITCHER WITH COVER FEEDER AND 5-KNIFE TRIMMER (INCLUDING LOOP STITCHING)
- MCCAIN 6-POCKET SADDLE STITCHER WITH COVER FEEDER AND 5-KNIFE TRIMMER (INCLUDING LOOP STITCHING)
- MUELLER 6-POCKET SADDLE STITCHER WITH COVER FEEDER (INCLUDING LOOP STITCHING)
- FIVE STAHL FOLDERS: 64-PAGE 26" x 40" WITH ENVELOPE CONVERTING CAPABILITIES
- TWO STAHL FOLDERS: 64-PAGE 30" x 40"
- MOLL POCKET FOLDER FORMER: 30" WITH FINAL FOLD UNIT AND POCKET GLUER
- MOLL PERFORATION AND CREASE 1
- ROLLEM TR30 SCORE AND STOP PERFORATION
- THREE POLAR 98-CHANNEL, 45" PAPER CUTTERS WITH AUTOMATED CUTTING LINE INCLUDING STACKLIFT, JOGGING TABLE AND STACKING UNIT (ALL WITH COMPUTER PROGRAM CONTROL)
- ITOH 54" PROGRAMMABLE DIGITAL CUTTER WITH AUTOMATED STACKING SYSTEM
- AUTOMATIC SHRINK WRAP w/TUNNEL 24" x 28"
- DICK MOLL REMOISTENABLE GLUE AND GLUE BINDING CAPABILITIES

PEAKE DELANCEY, THE LEADING INDEPENDENT COMMERCIAL PRINTER IN THE EAST



MAILROOM AND ASSEMBLY

- 47,500-SQUARE FOOT FACILITY
- POLAR 16-CHANNEL 32" PAPER CUTTER
- BAUM 2-UNIT FOLDER
- THREE 40' AUTOMATED ASSEMBLY LINES
- TWO 20' AUTOMATED ASSEMBLY LINES
- GBC AUTOMATIC PUNCH AND BINDER
- BOSTITCH HAND SADDLE STITCHER
- ROSSBACH 2-STATION AUTO STITCHER
- IN-LINE NORDSON FUGITIVE (4-HEAD) GLUE APPLICATORS
- 3M 'D'-TAPE (4-HEAD) APPLICATOR
- AUTOMATIC LAWSON DRILL
- SHANKLIN A-25 AUTOMATIC SHRINK WRAPPER
- SHANKLIN S-24 SEMI-AUTOMATIC SHRINK WRAPPER
- BESSLER PARIAGLE SHRINK WRAPPER
- AUTO GROMMETS
- AUTO BAGGING
- POLYCORD TYING MACHINE
- AUTOMATIC SHEET COUNTER AND SKID WRAPPER
- COMPLETE HAND BINDERY OPERATION
- PITNEY BOWES MODEL 6100 AUTOMATIC MAILER
- HASLER POWERPOST AUTOMATIC MAILING SYSTEM

- RITE-JET INKJET/TAB USING MAIL MANAGER 2010
- RENA IMAGER III INKJET PRINTER PERSONALIZATION OF LETTERS, SIGNATURES, ENVELOPES, CARDS AND BARCODES
- DHL ON-LINE SYSTEM
- BULK MAIL FACILITY

SHIPPING AND 24-HOUR SERVICES

- RADIO AND CELLULAR PHONE DISPATCHED COURIER SERVICE
- SEVEN VANS
- ONE 22' STRAIGHT TRUCK
- THREE 24' STRAIGHT TRUCKS
- MIMA STRETCH WRAPPER
- WULFTEC STRETCH WRAPPER
- ELECTRONIC DIGITAL SCALES (TOLEDO)
- COMPUTERIZED LABELING WITH BARCODE CAPABILITIES
- COMPUTER CONTROLLED STORAGE SERVICE IN OUR 140,000-SQUARE FOOT BUILDING
- FRIDEN MODEL 8710 COMPUTING SCALE WITH ZIP TO ZONE AND COUNTING FEATURES
- UPS AND FedEx POWERSHIP SYSTEM



2500 SCHUSTER DRIVE
CHEVERLY, MD 20781
PHONE: (301) 341-4600
TOLL FREE: (800) 521-7325
FAX: (301) 341-1162

EMAIL: sales@peakedelancey.com
WWW.PEAKEDELANCEY.COM